

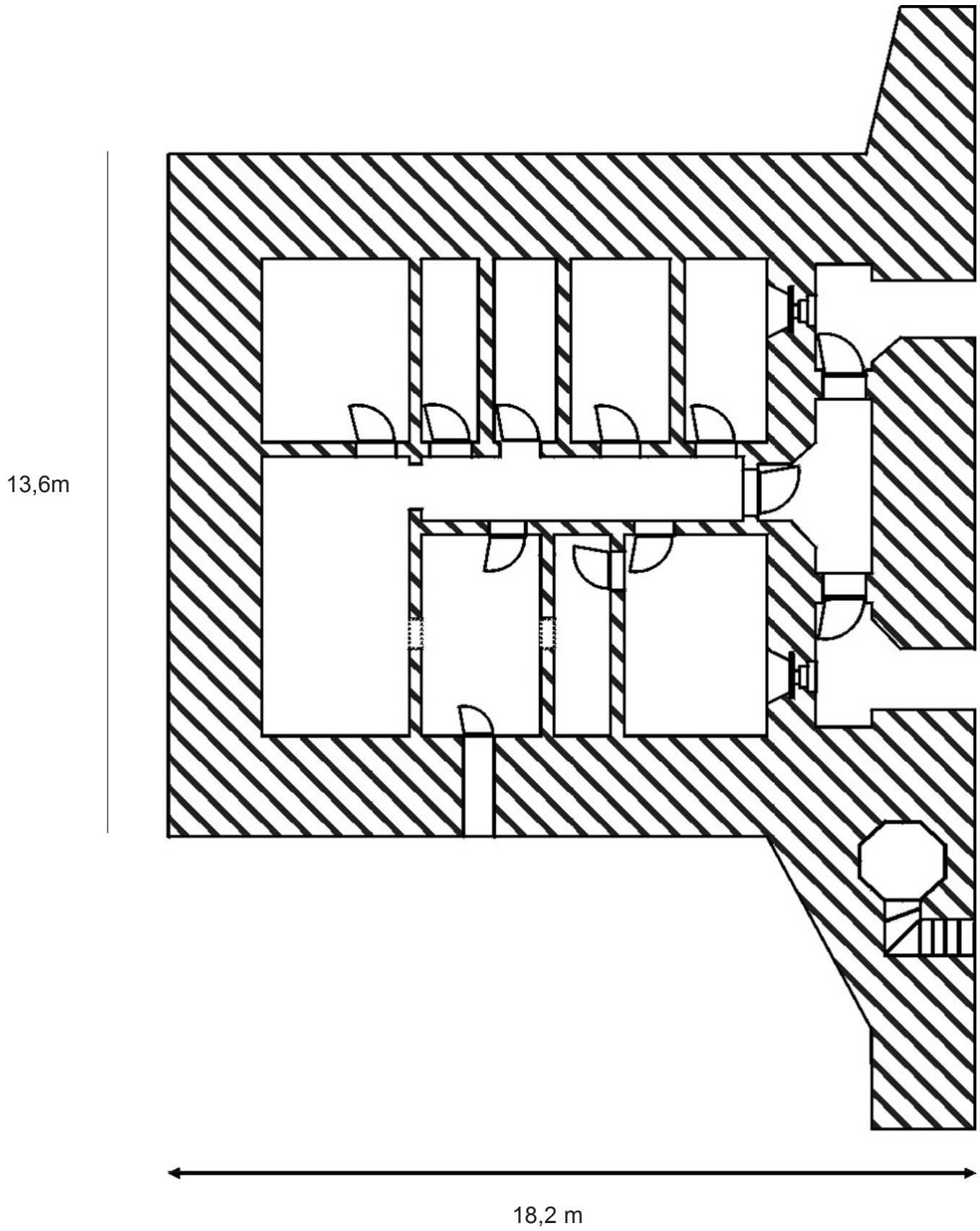
**Suggestion for Protection**

**german built during W WII**

**Luftwaffen Specialconstruction**

**Headquarter**

# Luftwaffen Bunker used as Airfield Headquarter



## **locations known in Norway ( from north to south ):**

Stavanger: Soma ( former Strongpoint Basisberg )

Lista: Vestre Hauge ( see map No 1 )

( At the moment only this two types are known on the entire Atlantikwall !!! )

## **Suggestion for protection of "Gefechtsstand" Vestre Hauge, Lista"**

The bunker, known by the army as 1001, is as far as we know a unknown type.

It probably belongs to a group built late in the war, probably between 43-45.

The group called "Regelbau" are not too common in Norway. In addition, 1001 has never been described by other historians. No official papers seems to exist.

So far, only 2 bunkers of this particular design is known in Europe.

The bunker is gasproof, it has a central heating system, and even heating in the ventilation system which is able to overpressurize all rooms.

All this equipment is very well preserved, and easy to restore. The bunker also has most of its original wooden panels and floors still intact, something which is very uncommon throughout Europe.

Today, there are bunkermuseums which has lesser original interior than 100 has! The bunker is close to untouched, as the army hasn't done any changes with the original layout.

During the war, 1001 was most likely the "Gefechtsstand" for Lista airport.

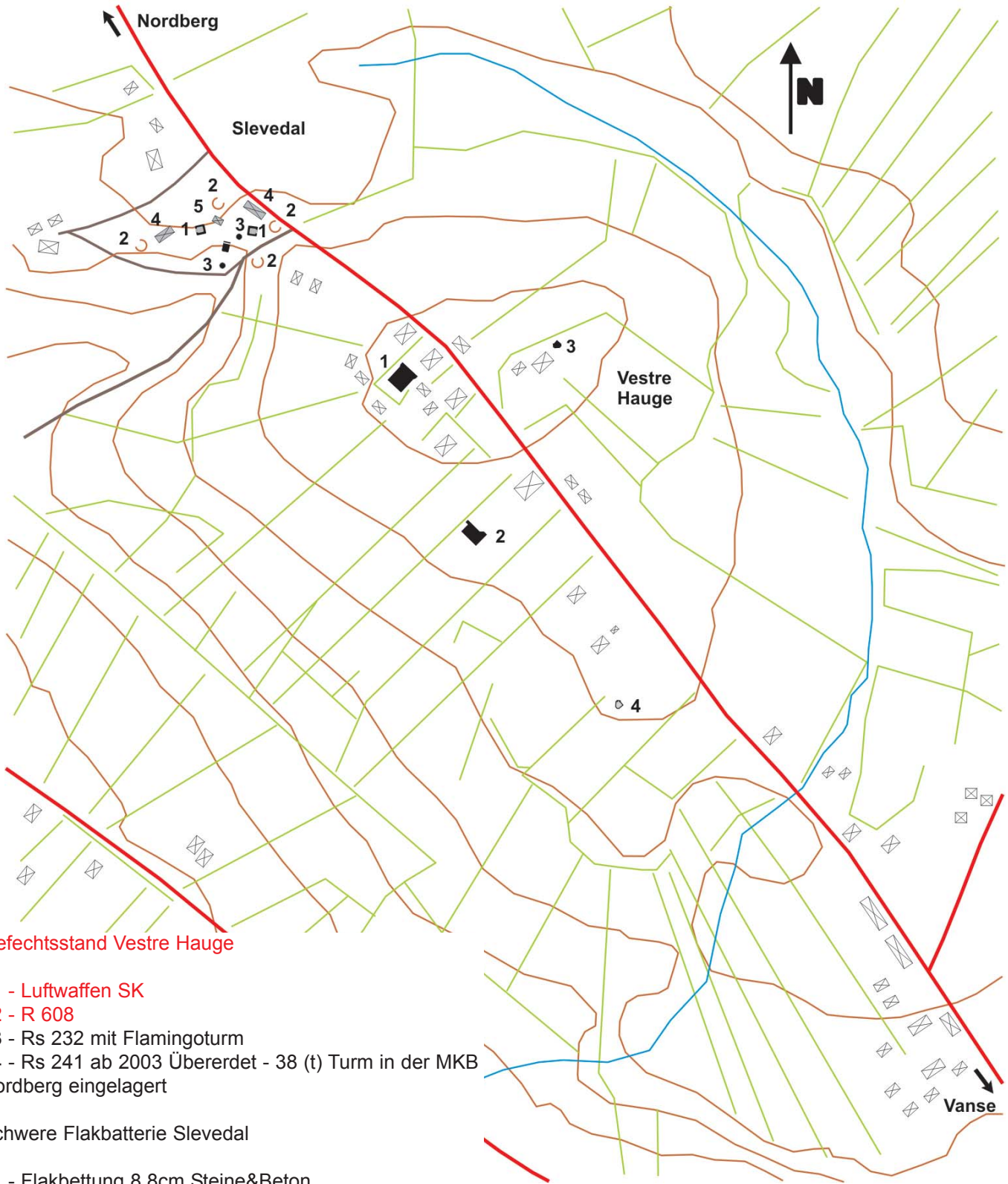
The bunker would be used by Luftwaffe as hq during attacks near Lista.

In short, this was the heart of the Luftwaffe on Lista.

## **Conclusion:**

Big command bunkers in "Regelbau" style are hard to find in Norway. The fact that this bunker is close to 100% intact, places it in an own category. Some museums runned today, will never be able to show original interior the way it could be done in "1001"

Gefechtsstand + schwere Flakbatterie	<b>Gefechtsstand Vestre Hauge + Schwere Flakbatterie Slevedal Vestre Hauge + Slevedal</b>	ERG 09/01
TK 1311 II FARSUND 1:50.000		N2 4633 400 [N2 909]
		o.Maßstab 21.03.2003



**Gefechtsstand Vestre Hauge**

- 01 - Luftwaffen SK
- 02 - R 608
- 03 - Rs 232 mit Flamingoturm
- 04 - Rs 241 ab 2003 Übererdet - 38 (t) Turm in der MKB Nordberg eingelagert

**Schwere Flakbatterie Slevedal**

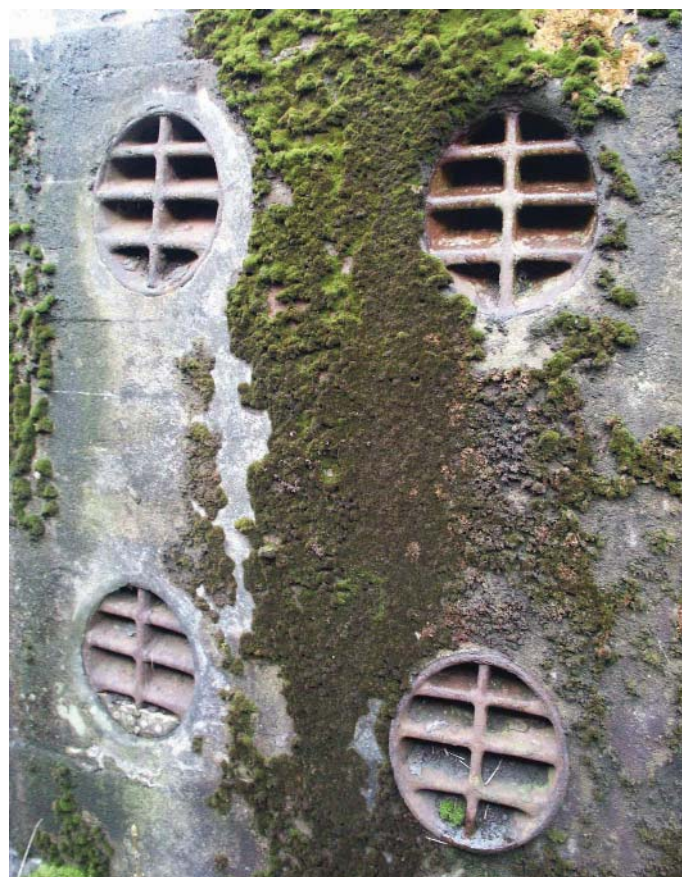
- 01 - Flakbettung 8.8cm Steine&Beton
- 02 - Flakbettung 8.8cm Erdwal
- 03 - Bettung leichte Flak
- 04 - Betonbaracke
- 05 - Barackenfundament
- 06 - VF Unterstand



**Lista Vestre Hauge:** Entrance area of the Luftwaffe special-construction



**Lista Vestre Hauge:** Entrance area of the Luftwaffe special-construction (different angle)



**Lista Vestre Hauge:** air-intake - air exhaust



**Lista Vestre Hauge:** Main corridor



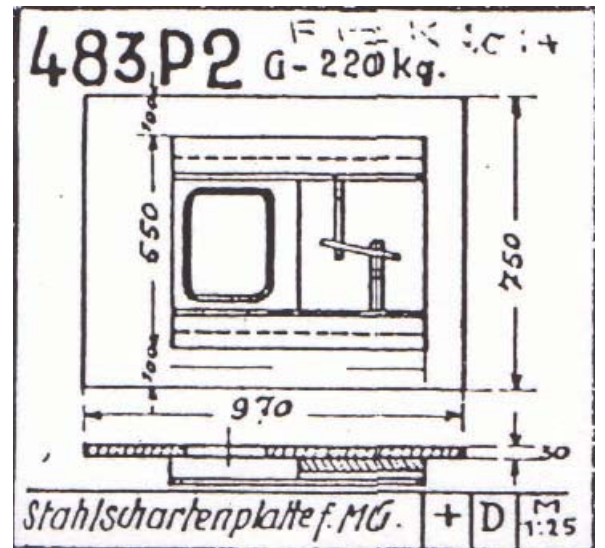
**Lista Vestre Hauge:** water pump



**Lista Vestre Hauge:** antenna mounting in the entrance area



**Lista Vestre Hauge:** main air-filter called HES 2,4 ( one new filter added postwar ),



**Lista Vestre Hauge:** Entrance defence of the Type 483P2, use din this building two times



**Lista Vestre Hauge:** Entrance area of the R 608 ( see map building No. 2)